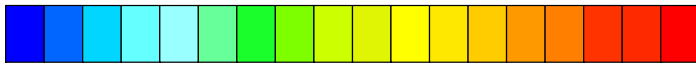
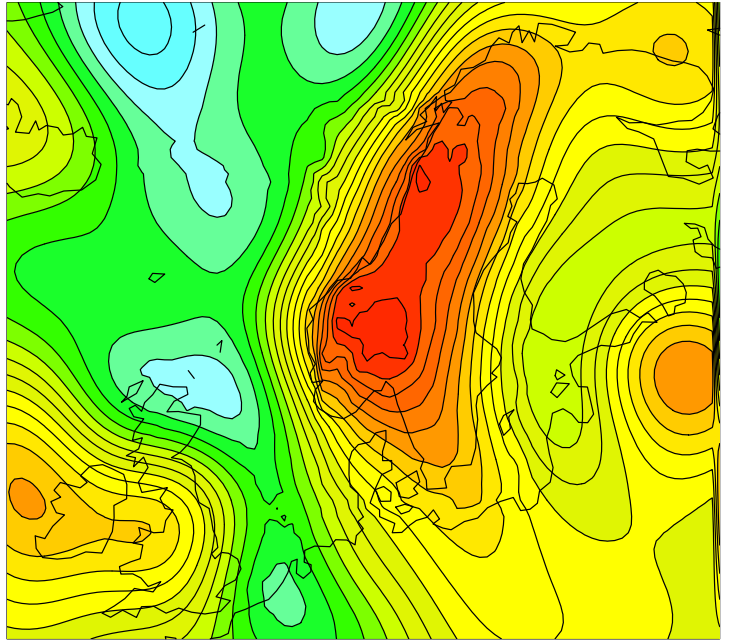
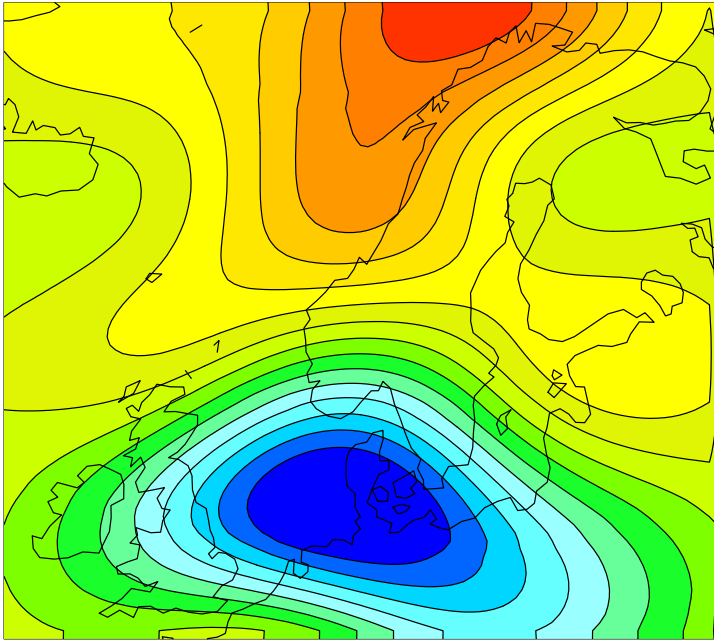
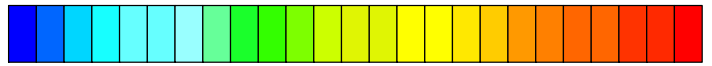


# AN-FG 2015033100 d01

U Eta = 0.31935 m s-1 PH Eta = 0.31935 m2 s-2

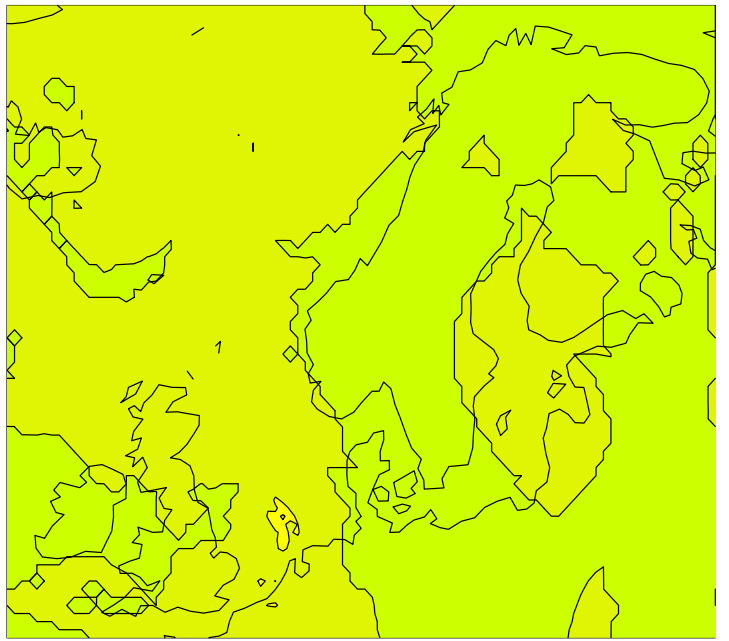
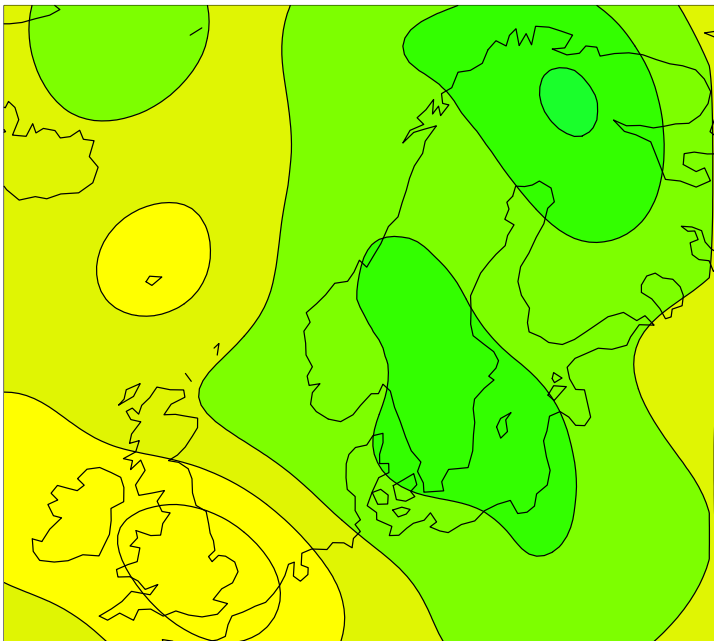


-2 -1.75 -1.5 -1.25 -1 -0.75 -0.5 -0.25 0 0.25 0.5 0.75 1 1.25 1.5 1.75 2



-200 80 60 40 20 0 80 60 40 20 0 20 40 60 80 100 120 140 160 180 200 220 240 260

Theta' Eta = 0.31935 K QV Eta = 0.31935 g/kg



-1.5 -1.3 -1.1 -0.9 -0.7 -0.5 -0.3 -0.1 0.1 0.3 0.5 0.7 0.9 1.1 1.3 1.5



-0.6 -0.5 -0.4 -0.3 -0.2 -0.1 0 0.1 0.2 0.3 0.4 0.5 0.6